

PDF Portfolio—Gayle Croissant-Madden
Technical Illustration, Graphic Design,
Graphic Production for print or web



gayle@airjam.com
<http://www.cardigras.com>

Navigation instructions:

When downloaded and open in Acrobat, this is a self scrolling, full screen presentation. To exit the presentation press the Esc (escape) key at the upper left of your keyboard.

If viewed from within a browser, you may need to manually forward the frames by using the arrow keys on your keyboard.



Book Production

Parts catalogs — start to finish

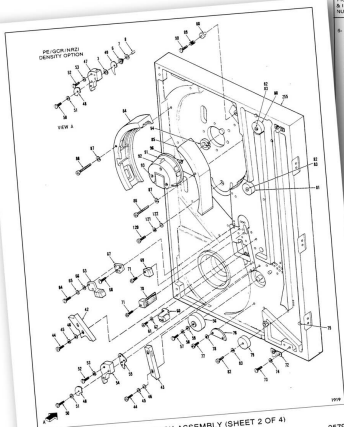


FIGURE & INDEX NUMBER	PART NUMBER	DESCRIPTION				USABLE ON CODE	QTY PER ASM
		1	2	3	4		
04	4363401-3				GUIDE ASSEMBLY, DOUBLE HUMP		1
05	4343399-6				FLANGE, REAR		1
06	4343289-9				CAPSTAN, VACUUM		1
07	10013026-9				SCREW, MACHINE, SDNH, 36-32 X .375, PS		1
80	4362770-4				WEAR BLOCK ASSEMBLY		1
41	10007916-0				SCREW, MACHINE, SHC, 4-48 X .500		1
42	10020532-0				WASHER, LOCK, HEL, MED, NO. 6, PS		1
43	401326491-3				FOOT ASSEMBLY, H.S.R., 1950		1
44	10013027-7				SCREW, MACHINE, SDNH, 10-32 X .500		2
45	10020532-0				WASHER, LOCK, HEL, MED, NO. 6, PS		2
46	10020504-1				WASHER, FLAT, A, NO. 6		1
47	09017419-3				MOUNTING PLATE ASSEMBLY		2
48	10013026-9				SCREW, MACHINE, SDNH, 6-32 X .375		2
49	09002706-6				CLEANER ASSEMBLY		1
70	43024200-9				EDT, BOT ASSEMBLY, MOLDED		2
68	10013026-9				SCREW, MACHINE, SDNH, 6-32 X .375, PS		2
71	10007909-1				SCREW, MACHINE, SHC, 6-32 X .750		2
72	00000096-1				CATCH		2
73	18013026-9				SCREW, MACHINE, SDNH, 6-32 X .375, PS		3
74	10030503-6				WASHER, LOCK, HEL, MED, NO. 6, PS		4
75	42429887-8				DOWEL TAPE, FRIHOL, FUD		4
76	42430532-3				BEARINGS, HYDRODYNAMIC		4
77	10007928-3				SCREW, MACHINE, SHC, 6-32 X .375		2
78	10030503-6				WASHER, LOCK, HEL, MED, PL, NO. 6		2
79	43022940-5				AIR BEARING ASSEMBLY, FWD ISOLATION		2
80	43022500-7				AIR BEARING ASSEMBLY, COLLUMN		3
81	43022500-7				AIR BEARING ASSEMBLY, RESTRAINT		3
82	10007928-3				SCREW, MACHINE, SHC, 6-32 X .525		3
83	10030503-6				WASHER, LOCK, HEL, MED, NO. 6, PS		3
84	491214601-0				RESTRAINT ASSEMBLY, LEFT HAND		1
85	43022100-1				RESTRAINT ASSEMBLY, RIGHT HAND		1
86	10998236-2				SCREW, MACHINE, SHC, 10-32 X 1.75, 80		5
87	10998072-3				WASHER, LOCK, SPLIT, NO. 10, 80		5
88	42429130-9				LATCH, COLUMN, DOOR		3
89	42429227-2				WASHER, LOCK, SPLIT, NO. 10, 80		3
90	10068267-9				SCREW, MACHINE, HS, 10-32 X .312, 55		1
91	43022100-1				FILE HUB ASSEMBLY, MANUAL		1
92	43436076-3				CAP, HUB, HIGH SPEED		1
93	10007709-8				SCREW, MACHINE, SHC, 40 X 1.250, 60		1
94	42426327-0				COLLAR, CLAMPTITE		1
95	42420188-3				SPRING, COIL, BUTTON		1
96	09018462-2				FILE PROTECT ASSEMBLY		2
97	10013026-9				SCREW, MACHINE, SDNH, 6-32 X .375, PS		2
98	10030503-6				WASHER, LOCK, HEL, MED, NO. 6, PS		2
99	49120360-0				COVER ASSEMBLY, RESTRAINT PLENUM		1
100	10013026-9				SCREW, MACHINE, SDNH, 10-32 X .575, 80		2
	10013066-0				SCREW, MACHINE, SDNH, 10-32 X .550, PS		2
	491214901-1				PLATE, COVER, RESTRAINT PLENUM		1
	491214701-6				GASKET, RESTRAINT PLENUM		1
	10111923-7				FITTING, EL, BARR, 3/16 X 1/8 NPT		1
	10111108-2				FITTING, EL, BARR, 3/16 X 1/8 NPT		2
	4343404-4				TAP, 3/16 MANOMETER, 275 ID		1

Solbourne Computer, Inc.

OS/MP 4.1A.2
Installation
Instructions

Solbourne Computer, Inc.
1900 Pike Road
Logansport, CO 80301
303-772-3400
FAX 303 7720646

Part Number: 102245
Revision: AA

Collateral design



AcerAltos Internet Server

The AcerAltos Internet Server provides necessary tools to take the first step into the Internet/Intranet world. Included in this package is the industry's leading software that will help you create your Intranet network, and establish your company's presence on the Internet.

Included in this package are:

Netcape Mail Server 2.0

- SMTP, POP2, SSL 2.0, IMAP compliant
- Easy point-and-click administration
- Embedded mail client in Navigator Gold

Netcape FastTrack Server 2.0

- Web server with built-in security
- Online content creation and management
- HTML, HTTP, GDS, SSL, Java, JavaScript standards

Netcape Navigator Gold 2.0.2

- Easy Web page creation
- Secure Navigator browser
- HTML, HTTP, FTP, WWW, SMTP, POP2, IMAP, Java, JavaScript, SSL standards

AcerAltos StartUp

- System diagnostics
 - Online documentation
 - Service and support
- ...and more

For more information call
1-800-SEE ACER

www.acer.com/usa

© 1996 Acer America Corporation

P/N 90 AA788 011

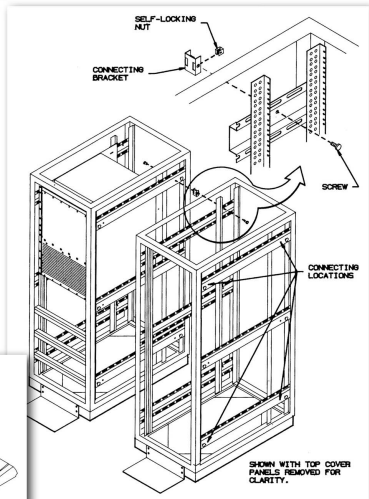
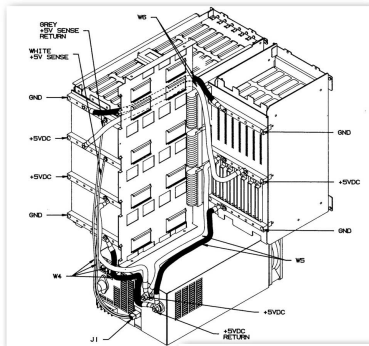
AcerAltos Internet Server

ACER

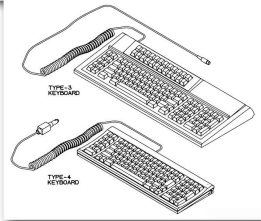
AcerAltos
Internet Server

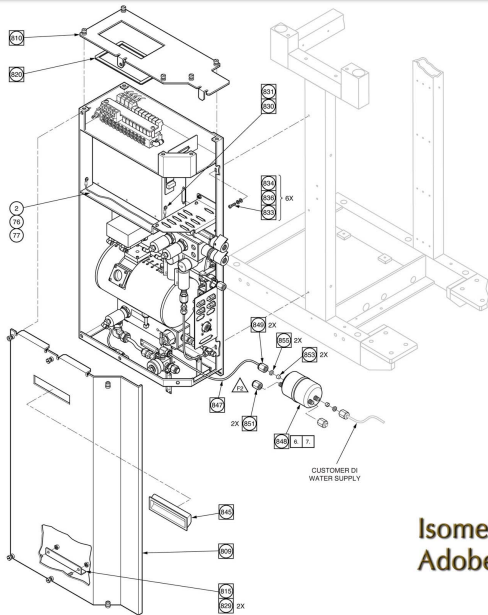
Netcape Mail Server 2.0
Netcape FastTrack Server 2.0
Netcape Navigator Gold 2.0.2
Acer StartUp 2.0

ACER

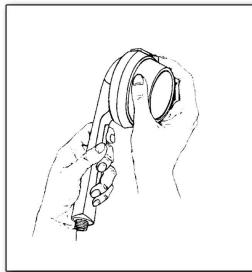
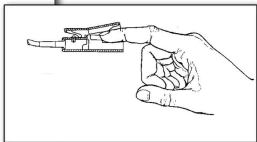
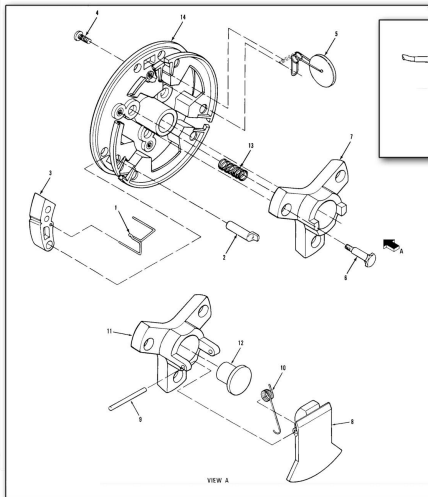


Isometrics in Anvil CAD














Isometrics in
Adobe Illustrator






**Traditional
Pen & Ink**

File systems and file management

/p/pub/gayle/techpart			
PRODUCT	DESCRIPTION	DWG NO	SUB DIR
	MODEL 800 PC DESKTOP SOLUTION	1000	/PD
	MODEL 800 PERIPHERAL SOLUTION MISCELLANEOUS	2000	
	MODEL 800 EPC DESKTOP CHECKER	3000	
	MODEL 800 EPC DESKTOP SERVER CHECKER	4000	

/p/pub/gayle/techpart			
PRODUCT	DESCRIPTION	DWG NO	SUB DIR
	IST INTEGRATED DESKTOP 8400	6000	/IDT
	LASERWRITER MODEL 410		
	EPC ART WITH A CHECKER OR THE CHECKER AS WE REQUEST	8000	
	PERIPHERAL EQUIP. MISCELLANEOUS	7000	
	SERIES 2000 HARDWARE	8000	

/p/pub/gayle/techpart			
PRODUCT	DESCRIPTION	DWG NO	SUB DIR
	SERIES 2000 HARDWARE	9000	/TRAC
	SERIES 2000 HARDWARE	9800	/HOME
	SERIES 2000 HARDWARE	9801	/BOO

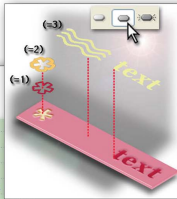
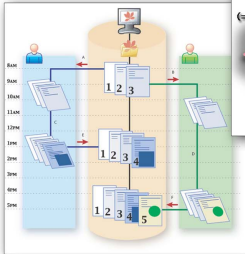
society for technical communication

silicon valley

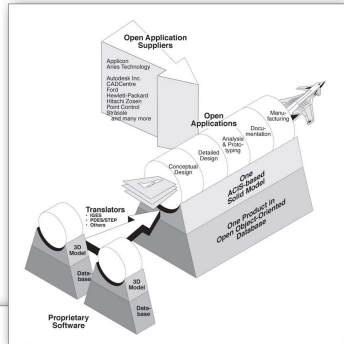


Logo Design

Web graphics



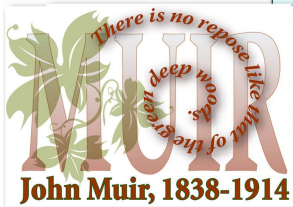
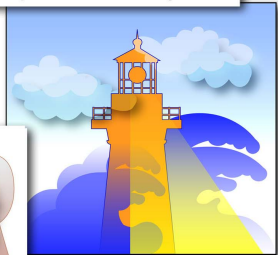
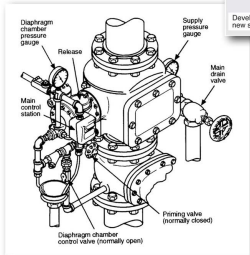
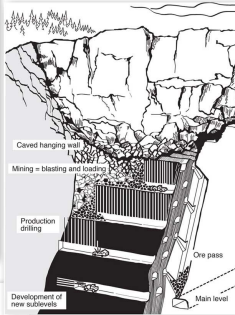
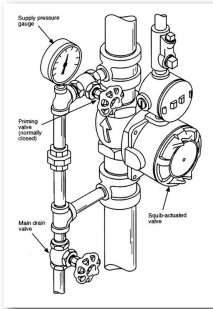
Technical concepts



Print illustrations



Spot Illustrations



Newsletter design in Pagemaker

Society for Technical Communication



CONNECTION

November/December 2001

Page 1

Page 2

Page 3

Page 4

Page 5

Page 6

Page 7

Page 8

Page 9

Page 10

Page 11

Page 12

Page 13

Page 14

Page 15

Page 16

Page 17

Page 18

Page 19

Page 20

Page 21

Page 22

Page 23

Page 24

Page 25

Page 26

Page 27

Page 28

Page 29

Page 30

Page 31

Page 32

Page 33

Page 34

Page 35

Page 36

Page 37

Page 38

Page 39

Page 40

Society for Technical Communication



CONNECTION

April 2001

GRAMMARIAN Addresses Region 8 Conference



Editorial board member... history of the English...

Editorial board member... history of the English... has authored more than 2,000 books and articles about language and grammar...

More than a million of his books are in print. His books have been Book-of-the-Month Club and Literary Guild alternate selections...

He has been elected International Pastors of the Year and been profiled in magazines such as The New Yorker, People, and the National Enquirer...

He has been elected International Pastors of the Year and been profiled in magazines such as The New Yorker, People, and the National Enquirer...

He has been elected International Pastors of the Year and been profiled in magazines such as The New Yorker, People, and the National Enquirer...

STC Office Home Page

www.stc.org

Silicon Valley Home Page

stc-siliconvalley.org

This issue: April and May Guest Speakers Worst Manuscript Competition Contact Information

EDITING INDEXES

By Tara Golden
Creating good indexes is an art. An editor cannot ensure the greatest index unless she has a basic level of competence. This article provides tips on editing indexes so that they meet that level of competence.

Creating indexes is an art

Style and Format

Indexes are often overlooked in corporate style guides and it is unlikely that a stylist will be more likely to be stylistically inconsistent with the rest of the document.

- Pay special attention to the header and footer formatting style and font usage.
- Verify that the overall style of the index is readable. Some questions to ask: Are there odd wordings? Do page numbers appear abruptly? Are terms indexed properly?
- Ensure that the main terms are easily noticeable. The main terms should draw the reader's eyes, such as being bolder or in a larger font.
- Verify that symbols are listed before the alphabetical entries.
- Symbols should be listed in their own section before the alphabetical list. Symbols include: (dash), and, (quote), Some indexes include numbers, such as 44, in the Symbols section.

Main Terms

Main terms are the major terms referred to by readers. Main terms define the context for secondary terms.

Verify that major topics of the document appear in the index.

Check the index against the list of contents and introduction to ensure this coverage. Main terms should usually be nouns and imperative verbs. For example, use remove, instead of removing or removed. Reremoving and reremoved may be used as secondary terms.

- Check that synonyms are listed in main terms. If a list is used, check that create is also listed. The see and see also cross-references when appropriate.
- Check for duplicate entries and combine or remove them as necessary. If the index has removing, retrieve, and remove as main entries, combine these under remove.
- Ensure that all terms are relevant. For example, in a technical document it is not necessary to have an index entry for each person who contributed to the document, no matter how small, or only using one name in a list if you require a pointer to the list of contributors, see contributors as a main term.

INDEXES, Page 4

WE ARE ALL THESE LANGUAGES?



HTML DHTML... This article provides tips on editing indexes so that they meet that level of competence.

Helping Users in the Palm of Your Hand... This article provides tips on editing indexes so that they meet that level of competence.

Helping Users in the Palm of Your Hand... This article provides tips on editing indexes so that they meet that level of competence.

Helping Users in the Palm of Your Hand... This article provides tips on editing indexes so that they meet that level of competence.

Helping Users in the Palm of Your Hand... This article provides tips on editing indexes so that they meet that level of competence.

Helping Users in the Palm of Your Hand... This article provides tips on editing indexes so that they meet that level of competence.

July/August 2001

Helping Users in the Palm of Your Hand

By Tom Sawyer

The world seems to be getting smaller right before our eyes. Laptops and PDAs on some desktop computers are being used in calculator and address books.

- It provides information about the user.
- It replaces the need to carry large bulky books.
- It grants aid to on-call technical support/consultants and salespeople.

The screen of the Palm is only 256 pixels wide and 160 pixels high. To display information, the software must be optimized. Fortunately, there are software programs that make this easy. Turnover offers the Palm OS software after installing operating systems for Palm handheld devices. She then sold her boss documentation into the Palm for internal and external customers.

PALM USERS, Page 8

PALM USERS, Page 8

PALM USERS, Page 8

PALM USERS, Page 8



Creative
illustration

